

Erba Italia Conversation sofa, POA  
(price varies depending on materials).

# 2

## Design news

The latest Kartell pieces in Perth, Test Tube Objects' new online shop, the Vespa scooter lamp, new stores and those that have moved plus exclusive European and hand-crafted furniture at two special stores.

COMPILED BY Clare Ryan



### EUROPEAN EDGE

The refined and contemporary style of Italian furniture company Erba is now available through Arq Designs in Subiaco. The exclusive collection of sofas, armchairs and chaise longues is available in a range of vibrant or subtle colours and exclusive materials such as soft Italian leather. Arq Designs, 326 Rokeby Road, Subiaco (08) 9381 7044, arqdesigns.com.au.

## Design news

Spring scene | Products and trends



### AVANT-GARDE DESIGN

Exclusive to S&M Mobilia are the spectacular pieces by Spanish furniture company Ziru, such as the sleek Te chair (pictured). Ziru also has a striking new collection, Mila, Beth & Syd, which will be making its way to S&M Mobilia. Designed by Italian architect Massimiliano Mornati, it features luxurious materials and cutting-edge colours. S&M Mobilia, Unit 1/248 Stirling Highway, Claremont (08) 9284 5599, mobilia.com.au.

### HOUSE AND JARDAN

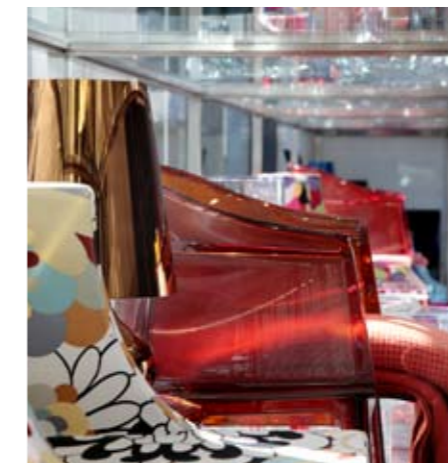
Table & Chair is the new exclusive agent for Jardan in WA. Made in Melbourne, the collection of dynamic furniture includes sofas, chairs, tables and beds. The family-owned and run company is dedicated to creating inspirational pieces of the highest quality – we love the vibrant green upholstery on the Archie sofa (pictured), POA. Table & Chair (08) 9388 1855, tableandchaircompany.com.au.



Supernova Prisma (in background) by Pepe Peñalver.

### FRESH FABRICS

Spanish company Pepe Peñalver's divine new range offers light colours and delicate details to refresh the home after winter. It features five 'books': Out of Africa (nature-inspired prints), Orient Express (paisley motifs and soft velvets), Brittany (classic colours), Supernova (geometric patterns) and Ceilan (sheer linen drapes). All POA, from Elliott Clarke c/o Warwick Fabrics, 23 Oxford Close, West Leederville, (08) 9286 6222, elliotclarke.com.au.



### KARTELL UPDATE

Ricarda's new Kartell concept store is the talk of the town. The latest products in-store are on trend for spring with bright colours and a contemporary style. The Moon bowl, \$135, (in orange, top) comes in a collection of fun colours – designed by Mario Bellini and made from synthetic material, its textured finish references the surface of the moon. The sleek design of the Super Impossible armchair, \$545, designed by Philippe Starck and Eugeni Quitllet, makes it a stand-out modern design for the home. Ricarda Subiaco, 399 Hay Street, Subiaco (08) 9381 5446.

Kartell Super Impossible armchairs



NEITHER THE THIRD FLOOR  
NOR THE PRICE ARE OUT OF REACH,  
**DARLING**

Grant Elevators recognise that, thankfully, everyone's sense of style is different, so we craft residential lifts to your exacting, individual specifications.

Drawing on four generations of experience in the business, Grant turns elevators – and customers' homes – into works of art, so there is no need to compromise your taste for convenience.

And while the statement may be grand, you might be surprised to know the price is far from it.

Grant's commitment to personal service extends to our after-sales care that will keep your elevator in showroom condition well into the future.

Whatever it calls for, Grant will proudly craft a statement that takes you to higher ground.

To see our collection of customised elevator solutions, visit [grantelevators.com.au](http://grantelevators.com.au) or call 08 9379 3465.

**GRANT  
ELEVATORS**  
Lift your style

**Design news**

Spring scene | Products and trends



**TEST MARKET**

Since taking the reins at boutique homewares store Test Tube Objects, Philia Kailis has also taken the store to the world stage. Not only is it bursting with products from elite designers around the globe but it has also just launched an online store and gift registry. “We received a lot of interest from throughout Australia and Asia, so I’m thrilled to finally be able to provide customers the opportunity to access our unique wares online and also expand on the existing support we receive from our large local following,” says Philia.

A blog is also on the cards, she says. It will be design-focused and have a homewares slant, with posts spanning the fields of architecture, print, film, product design, music and more. There will be five contributors, including Philia. “We all come from different backgrounds but all work in creative fields. Two bloggers are expatriates living in Berlin and New York... one is a Perth-based art director and the other is a Curtin creative graduate who works in the store.”

Brands already at the store are Jack Spade, Designfenzider and Content and Container. New to the store (and Australia) are beautiful glass lanterns from Rosenthal (far left), jugs from Holmegaard (left) and unique bowls from BetonWare. Philia hopes to find more treasures at this year’s Maison et Objet trade fair in Paris. *Test Tube Objects, Shop 6, 595 Beaufort Street, Mt Lawley (08) 9228 1118, testtubeobjects.com.au.*

**Nature lover**

Be mesmerised by these unique paperweights by artist Danielle Rickaby. The pieces, entitled *Fescue*, refer to a breed of grass often used as turf. The lush-looking paperweights are lifelike and designed to remind people of the green lawns of Kings Park. *The turf paperweights are \$99 each at Aspects Of Kings Park, Fraser Avenue, Kings Park (08) 9480 3900, aspectsofkingspark.com.au.*



**CHINA DESIGNER**

Jasper Conran and his renowned vibrant designs are back in force with the launch of the Kilim collection. The British fashion designer and Wedgwood have combined forces to create a contemporary and colourful design inspired by ancient tribal Kilim rugs. The result is a fun table setting. Purple and green teacup and saucer (above), \$99.95/pair, also available in a pair of red and orange. *Available from Table Culture (08) 9380 6233 – for other WA stockists visit waterfordwedgwood.com.au.*

**TOP 3 HOT TREND | LAMPS**



**SPOT COLOUR** | Pick a hue to suit your mood with the Blomma floor lamp, \$1925, and table lamp, \$1480. Both have changeable coloured inserts in red, black, grey and white. *From Halo Lighting (08) 9221 5544, halolighting.com.au.*



**COASTAL CHIC** | The Hampton Lamp, \$169, is a classic with a modern twist. White gives a fresh look and the textured stand complements the clean cut of the shade. *From Beacon Lighting 1300 232 266, beaconlighting.com.au.*



**RETRO** | Made from genuine Vespa parts in Parma, Italy, the Vespa lamp is a fun piece for the home. The headlight can be dimmed to suit your lighting needs and the colour of the lamp mimics the original colour of the Vespa scooter. *Small lamp, \$449, and large, \$1189, available from Monde, Claremont (08) 9284 4141.*

**VERA**

HIGH ELECTRONIC KETTLE

- ENERGY SAVING
- ENVIRONMENTALLY SAFE
- REDUCED HEATING TIME



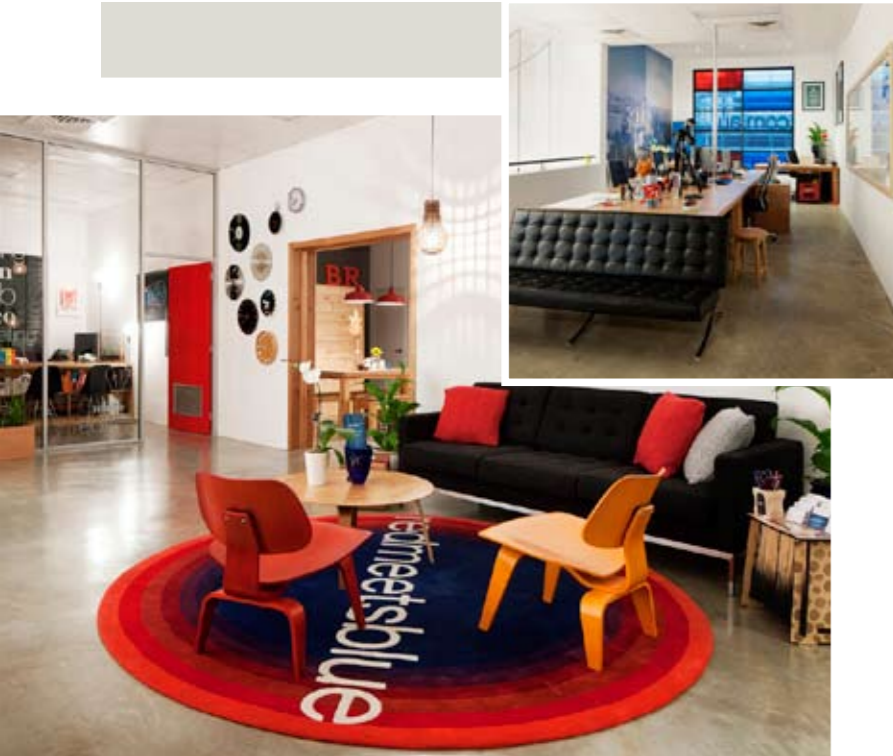
\* COLOUR CHOICE



126 ROKEBY RD SUBIACO 6008  
WESTERN AUSTRALIA  
P 08 9380 6233  
www.tableculture.com.au

## Design news

Spring scene | Products and trends



### THE SPEED OF LIGHT

Stop in your tracks with a pendant light made from street signs. The Speed Light brings a modern and graphic element to the home through the use of recycled (and legally collected) signs. Designer Brett Coelho used an assortment of coloured signs to create the hand-folded lights. The large pendant, \$750, and the small pendant, \$250, are available at Tongue and Groove (03) 9416 0349, [tongueandgroove.com.au](http://tongueandgroove.com.au).

### PURPLE PATCH

Exciting commercial designs, such as the revamped Subiaco HQ of digital branding agency Red Meets Blue Design (above) can offer inspiration for the home. A polished concrete floor, a boardroom table in African zebrawood, Eames chairs and a custom-made rug with the company logo blend to create a look that's minimal yet still has an impact. Visit [redmeetsblue.com.au](http://redmeetsblue.com.au).



### SWATCH THIS SPACE

If you're an avid follower of the latest Pantone releases (like a few graphic designers here at Scoop) you'll be excited to learn that the new collection of notebooks is now available. Choose from the Pantone A4 sketchbook, \$24.95, reporter notebook, \$9.95, A6 notebook, \$14.95, and A5 notebook, \$19.95. For WA stockists call (02) 9690 0016.



### Fringe benefits

Exclusive to Leederville store Ambassador de Buenos Aires is the Fringe Studio range of vases, scented soaps, candles and trays. We love the Tiffany vase, \$98, and cloche (left), \$59.95, that can protect food or act as a decorative piece. Ambassador De Buenos Aires (08) 9328 4683, [ambassadordebuenosaires.com.au](http://ambassadordebuenosaires.com.au).

**STORE WATCH** | Find furniture and accessories from Africa and the Philippines at the adorable new store **Blu Peter** at 11/100 Stirling Highway, North Fremantle. Don't miss it when you drive past – look for the cute small cottage. Mt Lawley is also welcoming a new store. **Awfully Gorgeous** offers books, accessories, and homeware brands including French Bull, Papaya and Dorthe Hybel Ceramics. Pop into Shop 1, 591 Beaufort Street, Mt Lawley, (08) 6161 1610.

**Bauwerk colour** has outgrown its showroom and is moving up the road to Unit 1, 15 Emplacement Crescent, Hamilton Hill. At the time of print, both **Baileys** and **Cocoon** in Subiaco were also relocating to Stirling Highway, Claremont. Happy birthday to **Monde** which is celebrating its 15th birthday. The Bayview Terrace homewares store is a favourite with locals for its exclusive and handmade products. In our last edition, we featured the artistic South African-based homewares brand **Carroll Boyes**. The website given was actually a wholesale site. For the Claremont Quarter specialist store, go to [carrollboyesonline.com.au](http://carrollboyesonline.com.au) or call (08) 9284 6556.

# EXCLUSIVE OUTDOOR STYLE



**RAUSCH** STARTED IN GERMANY AS AN EXCLUSIVE OUTDOOR FURNITURE COMPANY IN 1958. **VIVA DESIGN** ARE PROUD TO ANNOUNCE THAT WE WILL HAVE EXCLUSIVITY OF THESE BEAUTIFUL PRODUCTS IN PERTH STARTING SEPTEMBER.

